

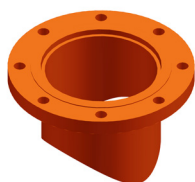
P.O. Box 1220, Nash, TX 75569-1220  
Phone: 903-832-2581, Fax 903-838-6260  
www.jcmindustrialfittings.com

Contact JCM: Call Toll Free 800-527-8482  
Fax Toll Free 800-874-9524  
sales@jcmindustrialfittings.com

### JCM Split Tee and Weld On Outlets for Industrial Service

**Weld-on taps and connections are dependable and economical with JCM Weld On Fittings**

Outlets, partial sleeves and complete sleeves are readily available for steel pipe 3" and larger with size on size and reducing outlets. Outlets and partial sleeves are also available for tank and bulkhead use. Various configurations of this design are available. and in 304 or 316 stainless steel.



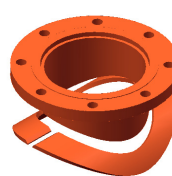
**476 Type 3:  
Flanged Nozzle Weld  
On Outlet**



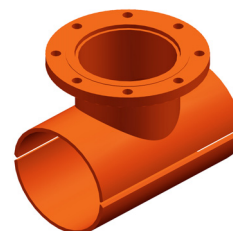
**476 Type 2  
Half Wrapper:  
Split Tee  
Three Piece  
Weld On Saddle**



**476 Type 2  
Rounded Corners:  
Split Tee  
Three Piece  
Weld On Saddle**



**476 Type 2  
Collar:  
Split Tee  
Three Piece  
Weld On Saddle**



**477 Type 1:  
Split Tee  
Weld On Tapping  
Sleeve**

#### MATERIAL SPECIFICATIONS

**Body:** ASTM 283, ASTM 285 Grade C, A516 Grade 70, ASTM A-36 Steel or equal.  
Optional 304 or 316 Stainless Steel.

**Finish:** Heavy coat of corrosion resistant metal primer. Optional Fusion Epoxy Coating available.

**Standard Flange:** ANSI B16.5 Class 150, 300, ASTM A105

#### Flanges Available Upon Request

ANSI B16.1 Class 125, 250

ANSI B16.47 Series A & B, Class 150, 300

Weld Neck, Blind, Slip-on, Reducing, Threaded, Socket Weld, Lap Joint, Angle Face, Van Stone  
Concentric and Eccentric Flanges

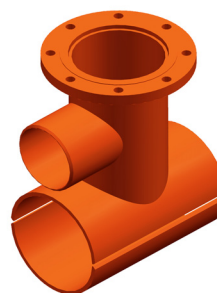
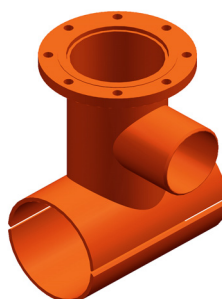
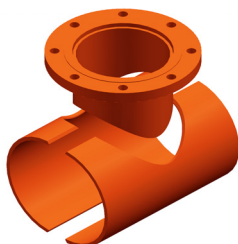
**Other Flanges available upon request**

**Typical Application:**  
Branching  
Permanent

**Monitoring Devices**  
Flow meters  
Line Branches

**For application parameters, contact  
JCM Technical and Engineered  
Sales  
800-527-8482 or 903-832-2581**

**Other configurations  
available upon  
request.**



#### HOW TO SPECIFY - JCM Weld On Outlets

1. Determine pipe O.D. and outlet size. Each sleeve is fabricated to the exact O.D. of the pipe.
2. Determine sleeve type required.  
For Standard 476 Type 2 Weld On Outlet for steel pipe with 6.63 O.D. with 6" outlet,  
order: 476-0663 x 6 Type 2.  
Other configurations and designs available

**Design code and NDE specifications required. JCM Fabricated Tapping Sleeves can be manufactured in a variety of styles and configurations including offset outlets, tapping crosses and other designs to best fit your needs. Submit application information to JCM Engineered and Technical Sales at 800-527-8482 or 903-832-2581.**