



Pipe Fittings & Fabrications for Industrial Service

P.O. Box 1220, Nash, TX 75569-1220
 Phone: 903-832-2581, Fax 903-838-6260
 www.jcmindustrialfittings.com

Contact JCM: Call Toll Free 800-527-8482
 Fax Toll Free 800-874-9524
 sales@jcmindustrialfittings.com

JCM 478 Threaded Outlet Tapping Sleeve for Industrial Service

For taps and connections on larger pipe, thin wall pipe and pipe requiring extra reinforcement.

The JCM 478 Fabricated Threaded Outlet Tapping Sleeve is especially recommended for service connections, drain ports, air relief valve connections, line content identification ports and taps on larger A/C, Cast Iron, Ductile Iron, PVC and Reinforced Concrete Pipe.

The heavy gasket section, recessed in a groove, and full sleeve support of this fitting offer much more stability, pipe reinforcement and strength than a strapped saddle, yet they are competitively priced.

Readily available for pipe 3" and larger requiring IPS outlets of 3/4" through 4", furnished with shop coat and alloy bolts. Epoxy coating and stainless steel bolts are available.



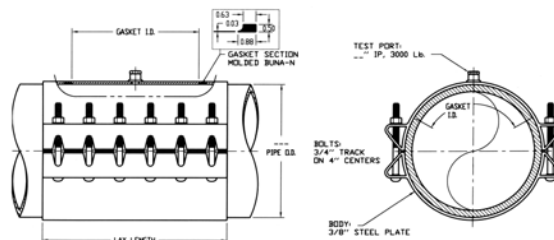
For aggressive or acidic conditions and line content, the JCM 478 is available constructed of all 304 or 316 Stainless Steel.

Available Options for JCM 478:

- Custom and Steel Pipe Sizes - O.D. Steel and Schedule Steel O.D.s
- Bolt On and Weld On Sleeve Design
- With CC Threaded Outlet (additional charge).



JCM 478 - Available in Stainless Steel (304 or 316)



Typical Application:
 Branching
 Permanent

Monitoring Devices
 Flow Meters
 Line Branches
 Drain Port
 Line Content Identification

For application parameters,
 contact JCM Engineered and
 Technical Sales
 800-527-8482 or 903-832-2581

JCM 478 Threaded Outlet Tapping Sleeve



478 FABRICATED THREADED OUTLET TAPPING SLEEVE (IPS Outlet)

NOMINAL PIPE SIZE		PIPE O.D. RANGE		SLEEVE NUMBER X OUTLET SIZE	APPR. WT. EACH (LBS.)
IN	MM	IN	MM		
3	80	3.50	88	478-0350 X --	18
		3.96	100	478-0396 X --	18
4	100	4.50	114	478-0450 X --	21
		4.80	121	478-0480 X --	21
6	150	6.63	168	478-0663 X --	23
		6.90	175	478-0690 X --	23
8	200	8.63	219	478-0863 X --	31
		9.05	229	478-0905 X --	33
10	250	10.75	273	478-1075 X --	38
		11.10	281	478-1110 X --	40
12	300	12.75	323	478-1275 X --	48
		13.20	335	478-1320 X --	51
14	350	15.23 - 15.80	388 - 401	478-1530 X --	57
16	400	17.33 - 17.87	440 - 453	478-1740 X --	64
18	450	19.41 - 20.01	493 - 508	478-1950 X --	72
20	500	21.51 - 22.15	546 - 562	478-2160 X --	80
24	600	25.71 - 26.41	653 - 670	478-2580 X --	95

OUTLET SIZE	ORDER CODE IP
3/4"	06
1"	08
1-1/4"	10
1-1/2"	12
2"	14
2-1/2"	16
3	17
4	18

Conversion of U.S./Metric dimensions are approximate; application pipe diameter and range to be verified by the end user.

MATERIAL SPECIFICATIONS:

- Body:** ASTM 283, ASTM 285 Grade C, ASTM A516 Grade 70 Steel or equal.
Optional 304 or 316 Stainless Steel
- Bolts:** Corrosion resistant, high strength low alloy ASTM A242, A193 B5, B7.
Optional A193 B8 304 stainless steel or 316 stainless steel.
- Gasket:** Nitrile Butadiene Rubber (NBR, Buna-N) per ASTM D2000. Molded virgin rubber with a pressure activated hydromechanical design. Gasket is bonded into a cavity for internal and external retention. Gasket temperature range -40°F to 212°F (-40°C - 100°C). Gasket suitable for water, salt solutions, mild acids, bases, and sewage. Optional gasket materials available.
- Finish:** Heavy coat of corrosion resistant metal primer. Optional fusion epoxy coating available.
- Service Rating:** 3/4" - 4" outlets: 150 PSI. Higher service rating available for specific applications.

Design code and NDE specifications upon request. JCM Fabricated Tapping Sleeves can be manufactured in a variety of styles and configurations including offset outlets, tapping crosses and other designs to best fit your needs. Submit application information to JCM Technical and Engineered Sales at 800-527-8482 or 903-832-2581.