

P.O. Box 1220, Nash, TX 75569-1220
 Phone: 903-832-2581, Fax 903-838-6260
 www.jcmindustrialfittings.com

Contact JCM: Call Toll Free 800-527-8482
 Fax Toll Free 800-874-9524
 sales@jcmindustrialfittings.com

JCM Split Tee and Weld On Outlets for Industrial Service

Weld-on taps and connections are dependable and economical with JCM Weld On Fittings

Outlets, partial sleeves and complete sleeves are readily available for steel pipe 3" and larger with size on size and reducing outlets. Outlets and partial sleeves are also available for tank and bulkhead use. Various configurations of this design are available. JCM Weld On Sleeves are available in 304 or 316 stainless steel.



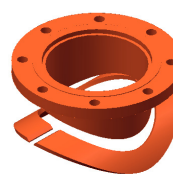
**476 Type 3:
Flanged Nozzle Weld
On Outlet**



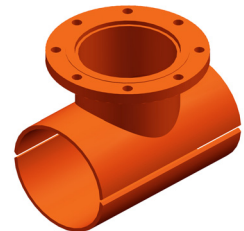
**476 Type 2
Half Wrapper:
Split Tee
Three Piece
Weld On Saddle**



**476 Type 2
Rounded Corners:
Split Tee
Three Piece
Weld On Saddle**



**476 Type 2
Collar:
Split Tee
Three Piece
Weld On Saddle**



**477 Type 1:
Split Tee
Weld On Tapping
Sleeve**

MATERIAL SPECIFICATIONS

Body: ASTM 283, ASTM 285 Grade C, A516 Grade 70, ASTM A-36 Steel or equal.
 Optional 304 or 316 Stainless Steel.

Finish: Heavy coat of corrosion resistant metal primer. Optional Fusion Epoxy Coating available.

Standard Flange: ASME/ANSI B16.5 Class 150, 300, ASTM A105

Flanges Available Upon Request

ASME/ANSI B16.1 Class 125, 250

ASME/ANSI B16.47 Series A & B, Class 150, 300

Weld Neck, Blind, Slip-on, Reducing, Threaded, Socket Weld, Lap Joint, Angle Face, Van Stone
 Concentric and Eccentric Flanges

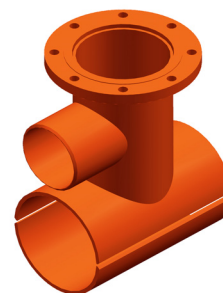
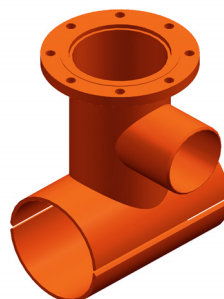
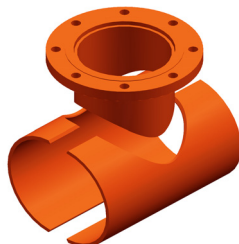
Other Flanges available upon request

Typical Application:
 Branching
 Permanent

Monitoring Devices
 Flow meters
 Line Branches

**For application parameters, contact
 JCM Technical and Engineered
 Sales
 800-527-8482 or 903-832-2581**

**Other configurations
 available upon
 request.**



HOW TO SPECIFY - JCM Weld On Outlets

- Determine pipe O.D. and outlet size. Each sleeve is fabricated to the exact O.D. of the pipe.
- Determine sleeve type required.
 For Standard Type 1 476 Weld On Outlet for steel pipe with 6.63 O.D. with 6" outlet,
 order: 476-0663 x 6 Type1.
 Other configurations and designs available

Design code and NDE specifications upon request. JCM Fabricated Tapping Sleeves can be manufactured in a variety of styles and configurations including offset outlets, tapping crosses and other designs to best fit your needs. Submit application information to JCM Engineered and Technical Sales at 800-527-8482 or 903-832-2581.