



# Pipe Fittings & Fabrications for Industrial Service

P.O. Box 1220, Nash, TX 75569-1220  
 Phone: 903-832-2581, Fax 903-838-6260  
 www.jcmindustrialfittings.com

Contact JCM: Call Toll Free 800-527-8482  
 Fax Toll Free 800-874-9524  
 sales@jcmindustrialfittings.com

## JCM Flanged Coupling Adapters for Industrial Service

### JCM 301 Standard Flexible Flanged Coupling Adapter

The JCM 301 FCA provides a quick simple means of joining flanged fittings to plain end pipe. The 301 will dampen vibration, accommodate pipe deflection and expansion, provide for easy equipment removal and reinstallation, and eliminate the need for exact measurements.

The Optional 301 Restrained Flanged Adapter provides torque head set screws which provide restraint for applications in which the pipe may move or pull out of the coupling. Recommended for Steel, Stainless Steel Cast Iron, Ductile Iron and other types of pipe applications.

NOMINAL PIPE SIZE		PIPE O.D. RANGE		CATALOG NUMBER	QTY OPTIONAL SET SCREWS	APPR. WT EACH (LBS.)
IN	MM	IN	MM			
3	80	3.50	88	301-0350	4	17
		3.80 - 4.17	96 - 150	301-0396	4	17
4	100	4.00	101	301-0400	N/A	22
		4.50	114	301-0450	4	22
		4.80 - 5.10	121 - 129	301-0480	4	22
6	150	6.00	152	301-0600	N/A	37
		6.63	168	301-0663	8	37
		6.90 - 7.20	175 - 182	301-0690	8	37
8	200	8.00	203	301-0800	N/A	44
		8.63	219	301-0863	8	44
		9.05 - 9.40	229 - 238	301-0905	8	44
10	250	10.75	273	301-1075	12	67
		11.10 - 11.40	281 - 289	301-1110	12	67
12	300	12.75	323	301-1275	12	94
		13.20 - 13.50	335 - 342	301-1320	12	94

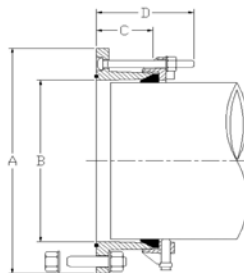
\*Set Screws are not for use on Asbestos Cement, HDPE or PVC pipe.  
 Add (R) to end of Catalog Number to indicate optional set screws.



JCM 301 Flanged Coupling Adapter furnished with Class 125/150 bolt pattern for 150 PSI service. For other flanges, see JCM 303 and 304 Fabricated Flanged Coupling Adapters.

### JCM 301 Dimensions

Nominal Size	A	B	C	D
3	8-1/8	5-1/4	3	5
4	9-1/8	5-1/4	3	5
6	11-1/8	7-5/16	3-1/2	5
8	13-1/2	9-9/16	3-1/2	5
10	16-1/4	11-9/16	4	6-1/2
12	19	13-5/8	4	6-1/2



### MATERIAL SPECIFICATIONS

**Sleeve & Flanges:** Sleeve - Ductile Iron Per ASTM A536  
 Flange - Ductile Iron with ANSI Class 125 & 150 bolt pattern

**Gaskets:** Styrene-Butadiene Rubber (SBR) has good physical properties. Compounded for use with water, salt solutions, mild acids and bases; has excellent abrasion resistance. Per ASTM D-2000. Standard temperature range from -40° to 150°F (-40° to 65° C) constant, maximum intermittent 180°F (82°C). For applications on high temperatures or chemical pipelines, contact JCM Industries Technical Services. The material is not recommended for use on oil, ozone or weather resistant applications.

**Bolts:** 5/8" Corrosion resistant, high strength low alloy oval neck track head bolts Corrosion resistant, high strength low alloy ASTM A242, A193 B5, B7. Optional A193 B8 304 stainless steel or 316 stainless steel.

Epoxy Coated Alloy Hardware, Powercron 590-534 black cationic electrocoat.

**Coating:** Corrosion resistant shop coat paint primer. Optional fusion applied epoxy coating per ANSI C-213. Other coatings available upon request.

**Typical Application:**  
 Connection  
 Temporary/Permanent  
 Connection/Insertion

**Valves**  
 Backflow Preventors  
 Flanged Fittings  
 Monitoring Equipment  
 Retrofit of Inline Fittings

**For application parameters,  
 contact JCM Engineered and  
 Technical Sales  
 800-527-8482 or 903-832-2581**