



Pipe Fittings & Fabrications for Industrial Service

P.O. Box 1220, Nash, TX 75569-1220
Phone: 903-832-2581, Fax 903-838-6260
www.jcmindustrialfittings.com

Contact JCM: Call Toll Free 800-527-8482
Fax Toll Free 800-874-9524
sales@jcmindustrialfittings.com

JCM 114 Fabricated Mechanical Joint Repair Sleeve for Industrial Service

For the repair of cast iron bells, split or leaking coupling and weld joints, flanged pipe joints or straight runs of pipe without costly shutdown or disruption to critical service.

No Shutdown or Interruption of Critical Service - by implementing a split fabricated mechanical joint design, the JCM 114 prevents costly down time and service disruption.

True Mechanical Joint Design - heavy fabricated steel body and pusher gland construction prevents the warpage and distortion experienced by repair sleeves using the split steel coupling designs.

Custom Built For Specific Application - this versatile mechanical joint fitting is built to meet the specific requirements of special applications. Eliminates lost time due to field or factory modifications.

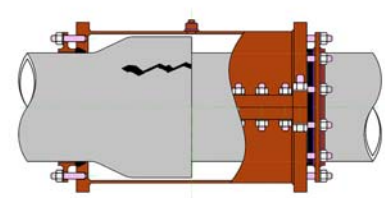
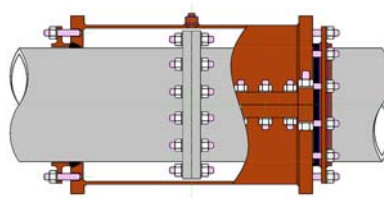
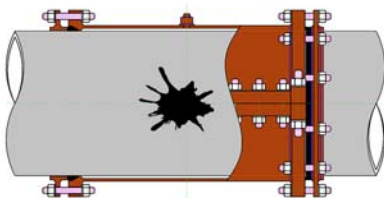
Strong and Lightweight - the 114 sleeves are ideal for installations where strength, weight and continued service are critical. The reduced weight of high strength steel aids in installation and handling as well as minimizing weight load on the pipe.



Available in Three Styles - the 114 MJ Split Repair Sleeve for use on straight runs of pipe, 114 MJ Flanged Joint Repair Sleeve and the 114 MJ Bell Repair Sleeve which is fabricated to accommodate the specific dimensions of the bell, collar or coupling to be repaired. The JCM 114 MJ Repair Sleeve can also be fabricated to accommodate two different O.D.'s of pipe.

Optional Materials - the 114 is available in carbon steel with special coatings and fasteners, or is available fabricated of 304 stainless steel or 316 stainless steel.

Sizes & Configurations - the 114 is available for pipe sizes 4" and larger. Custom design and product submittal for unique or problematic applications provided by JCM Engineering Group.



JCM 114 Fabricated Mechanical Joint Repair Sleeve

MATERIAL SPECIFICATIONS

- Body:** ASTM 283, ASTM 285 Grade C Steel, ASTM A516 Grade 70 or equal.
Optional 304 or 316 Stainless Steel.
- Glands:** ASTM A-36 Steel. Optional 304 or 316 Stainless Steel.
- Bolts:** Corrosion resistant, high strength low alloy ASTM A242, A193 B5, B7.
Optional A193 B8 304 stainless steel or 316 stainless steel.
- Gasket:** Nitrile - Compounded for use with water, salt solutions, mild acids and bases.
- Finish:** Heavy coat of corrosion resistant shop coat primer.
Optional Fusion Epoxy Coating available

HOW TO SPECIFY:

For specific product submittal, the following information must be furnished:

JCM 114 Mechanical Joint Split Repair Sleeve

The following information must be furnished.

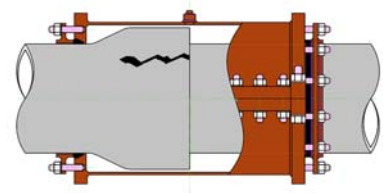
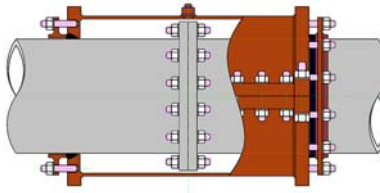
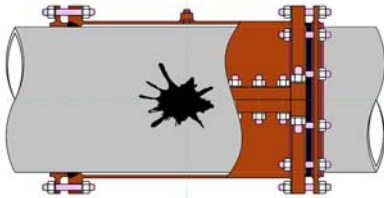
- Type of Pipe
- Pipe Outside Diameter
- Length Requirements
- Line Content and Temperature
- Line Pressure
- Finish or Coating Requirements

JCM 114 Mechanical Joint Bell Repair Sleeve

JCM 114 Mechanical Joint Flanged Joint Repair Sleeve

The following information must be furnished.

- Type of Pipe
- Spigot or Pipe Outside Diameter
- Largest Bell, Coupling, Flange Dimension
- Length Requirements
- Line Content and Temperature
- Line Pressure
- Finish or Coating Requirements



Typical Application:
Repair
Temporary/Permanent
Repair Pipe In Service

Cracked/Broken Pipe Joints
Splits
Holes
Failed MJ Joints, Fittings or
Couplings

For application parameters,
contact JCM Engineered and
TechnicalSales
800-527-8482 or 903-832-2581