



Pipe Fittings & Fabrications for Industrial Service

P.O. Box 1220, Nash, TX 75569-1220
 Phone: 903-832-2581, Fax 903-838-6260
 www.jcmindustrialfittings.com

Contact JCM: Call Toll Free 800-527-8482
 Fax Toll Free 800-874-9524
 sales@jcmindustrialfittings.com

JCM Pipe Restrainers for Industrial Service

JCM 610 Sur-Grip Fitting Restrainer

4" - 12" for use on C-900 PVC and Ductile Iron Pipe

4" - 8" for use on IPS PVC

Anchors IPS PVC, C-900 PVC Pipe and Ductile Iron Pipe to mechanical joint and other type fittings provided with anchor lugs.



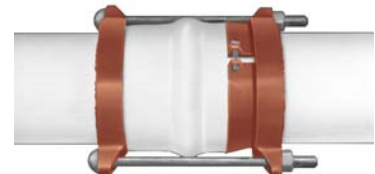
NOMINAL PIPE SIZE		PIPE O.D. RANGE		CATALOG NUMBER	SERRATED COMPRESSION RING BODY	T-HEAD BOLTS		APPR. WT.EA. (LBS.)
IN	MM	IN	MM		WIDTH	SIZE	QTY	
4	100	4.50	114	610-0450	2-1/2"	3/4 X 9-1/2	2	12
4	100	4.80	121	610-0480	2-1/2"	3/4 X 9-1/2	2	12
6	150	6.63	168	610-0663	2-1/2"	3/4 X 9-1/2	2	15
6	150	6.90	175	610-0690	2-1/2"	3/4 X 9-1/2	2	15
8	200	8.63	219	610-0863	2-3/4"	3/4 X 9-1/2	2	22
8	200	9.05	229	610-0905	2-3/4"	3/4 X 9-1/2	2	22
10	250	11.10	281	610-1110	2-3/4"	3/4 X 9-1/2	4	31
12	300	13.20	335	610-1320	2-3/4"	3/4 X 9-1/2	4	41

JCM 620 Sur-Grip Bell Joint Restrainer

4" - 12" for use with C-900 PVC and Ductile Iron Pipe

4" - 8" for use on IPS PVC

Anchors IPS PVC, C-900 PVC Pipe and Ductile Iron Pipe over the bell, flexible couplings and other low profile joints.



NOMINAL PIPE SIZE		PIPE O.D. RANGE		CATALOG NUMBER	SERRATED COMPRESSION RING BODY	COMPRESSION FOLLOWER RING		BOLTS		APPR. WT. EA. (LBS.)
IN	MM	IN	MM		WIDTH	WIDTH	QTY.	SIZE	QTY	
4	100	4.50	114	620-0450	2-1/2"	1-3/8"	2	3/4 X 12	2	16
4	100	4.80	121	620-0480	2-1/2"	1-3/8"	2	3/4 X 12	2	16
6	150	6.63	168	620-0663	2-1/2"	1-1/2"	2	3/4 X 12	2	21
6	150	6.90	175	620-0690	2-1/2"	1-1/2"	2	3/4 X 12	2	21
8	200	8.63	219	620-0863	2-3/4"	1-3/4"	2	3/4 X 14	2	32
8	200	9.05	229	620-0905	2-3/4"	1-3/4"	2	3/4 X 14	2	32
10	250	11.10	281	620-1110	2-3/4"	1-3/4"	2	3/4 X 18-1/2	4	49
12	300	13.20	335	620-1320	2-3/4"	1-3/4"	2	3/4 X 18-1/2	4	63

Conversion of U.S./Metric dimensions are approximate; application pipe diameter and range to be verified by the end user.